

DECEMBER 2019 | ISSUE N° 03 \$3.99

# ROBBY 诺贝



WANNA  
ONE

ANSWERS OUR  
16 QUESTIONS  
专访来袭  
你准备好了吗?

**BOLA,  
THE CHAMELEON  
WHEEL**

**BOLA**  
变色龙般的脚轮

**DECORATE  
YOUR HOLIDAYS  
WITH OLYM, MARIA  
AND KOO EVO**  
带上奥林,  
玛丽亚和酷75-2  
装饰你的假期吧

**5**  
STEPS TO CREATE  
YOUR CHRISTMAS BOX

简单5步  
DIY最特别的圣诞装饰柜

Welcome to the movement!

We will show you our products in your lifestyles, we will detail in an article all your values and we will convey great ideas to decorate your spaces, we will also share an interview with a designer from every place in the world every month. We will become a design community. Do you join the Robby community?

一起来，转出生活新精彩！~

也许你一直没发现，但诺贝的产品却一直与你的生活同在。这一期诺贝杂志的内容，对你的冲击可不止眼球，还有你的灵感思维，当你还在烦恼空间装饰的时候，我们创新大胆的想法已猛烈来袭，我们还会每期与你分享来自世界各地的设计师所接受诺贝的专访。亲，你就别犹豫、别怀疑了，这里就是设计时尚的潮流尖端，让我们一起来转出生活新精彩吧！

Raymond Pan  
General Manager

Christine Pan  
Sales Manager

# CONTENTS

揭开生活新篇章

04

奥林  
玛丽亚  
酷  
75

## OLYM, MARIA AND KOO EVO

We show you the most beautiful Christmas interiors decorated with our wheels.

安上我们的脚轮  
展示最美的圣诞室内装饰

10

专访

## WANNA ONE

Studio of marketing, design and interior design Wanna One by Esther Mengual and Cathy Figueredo.

由 Esther Mengual 和 Cathy Figueredo 两位才女创办的 Wanna One 设计工作室专注于营销，设计和室内设计



12

## CREATE YOUR CHRISTMAS BOX

We give you the best tips so you can choose with knowledge the wheels you are needing in your office.

简单5步  
DIY最特别的圣诞装饰柜  
给你的访客带来惊喜

DIY最特别的圣诞装饰柜

16

## BOLA, THE CHAMELEON WHEEL

It has a wide variety of colors to adapt to any environment. The favorite of many users.

多种颜色  
多种用途  
用户挚爱

BOLA 变色龙般的脚轮

# KOO EVO, A DREAM COME TRUE

We love this time of year because magical moments are lived and many dreams are fulfilled.

A few years ago we were able to manufacture for the first time a dream we had in mind, which had only begun with an inspiration and that ended up being a reality thanks to a fusion of engineering and design.

We wanted to take a leap beyond and make fully functional and innovative design wheels and so we have created our Koo Evo model, our dream come true. You can decorate your kitchen quietly with these wheels, which supports each more than 90kg and will contribute to Your environments a lot of design and warmth. In black for the more traditional, gray for more neutral environments and red for those who want to stand out.

Enjoy with your loved ones the warmth of home!

## 梦想成真 酷75-2

我们之所以爱上一年中的此刻  
是因为此刻是见证奇迹的时刻  
是因为此刻是梦想成真的时刻  
数年前，我们的梦想实现了  
不断完善，不断超越，  
工程与设计的完美融合  
Koo75-2由最初的灵感  
变成了最终的现实  
单个脚轮承重可达90公斤以上  
时尚、和谐的设计  
经典的黑色，中性的灰色，  
亮丽的红色  
你可放心用这脚轮装饰你的厨房  
与亲人共享家的温暖



# KITCHEN

# MARIA, OUR GOLDEN STAR

Who said Christmas is green and red? We are fascinated by the gold and sincerely we love how our wheels are Maria in such an environment.

金光闪闪  
玛丽亚

在红红绿绿、千篇一律的圣诞里,我们却偏爱金光闪闪的玛丽亚  
谁说圣诞主题色只有红和绿呢?

# OLYMNEO 奥林 II



This incredible design adapts and stands out in any environment you are in. Its hole in the middle and its delicate wheel will give your furniture, that elegant touch they are needing. In this type of trolleys we cannot deny that they are perfect, imagine the face of your guests when you approach with your service trolley to offer them a drink. Happy Holidays!

独特的设计适用于任何场合  
并能在任何场合中脱颖而出  
中空、精致的设计  
使你的家具变得优雅  
配合小推车使用，尽善尽美  
朋友，你需要喝一口  
小推车上的香槟吗？  
祝你节日快乐！

# WANNA ONE. SPAIN

Wanna One is a marketing, design and interior design studio specialized in brand experiences and 360 projects.

At Wanna One they have a purpose, to put their creativity at the service of companies willing to take risks, break the rules, bring optimism to their surroundings and create unique experiences.

**When designing, what superpower would you like to have?** C: Not having super power. That is the super power. Each project-moment is an adventure. Having a super power would make the path too short and it is precisely in that creative path where I enjoy the most.

**E:** To design exactly not, but I would not mind teleportation or being able to move in the Flash plan.

**Which of your designs would you choose to survive a zombie attack?** C: 2060 The Newton Hostel & Marke without a doubt! It's the hostel at the end of the world. It can not be more indicated for a zombie attack!

**E:** 2060 The Newton Hostel & Market would be the ideal place.

**If you could go to dinner with a designer, who would you go with?**

**C:** Patricia Urquiola. **E:** Jaime Hayón.

**Would you prefer to travel to the future or to the past?** C: Future, but if I can choose, I prefer the Present.

**E:** As Cathy I prefer the Now.

**In what influential period of design would you like to be born?** C: In the Bauhaus.

**E:** 1978 was a great year to be born.

**How would you describe yourself in 3 adjectives?**

**C:** Warrior, cheerful and responsible.

**E:** I have asked my parents to answer for me. Cheerful, spontaneous and frank, they add "trapatroles".

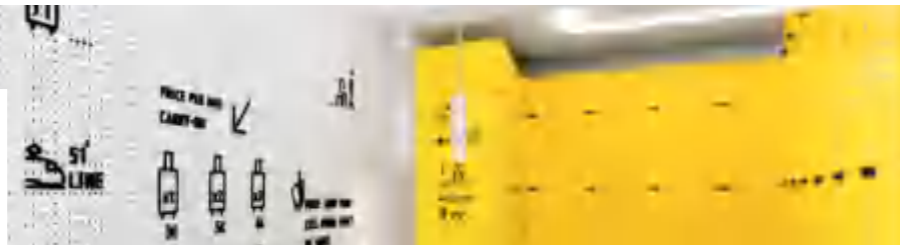
**If you wrote a book, what name would you put it?**

**C:** On y va! ("Venga y vamos", In Spanish)

**E:** Now.

**If you could learn to do something new, what would you choose?** C: I would learn Korean, to play the saxophone and the piano, to draw, to cook vegetarian ... There are so many things that a life would not be enough for me!

**E:** Ayurvedic cuisine, makeup, special effects and characterization, I would learn to tattoo, I would learn English ...



2060 The Newton Hostel & Market  
Photography: Caulin Photo

**What is the last book you have read?**

**C:** "The vraie vie" of Adeline Dieudonné. A black, fun and acid family novel with a manual of survival to hostile environments. Highly recommended

**E:** "The man in search" of meaning of Viktor Frankl.

**What could we find in your garbage basket?** C: "Kinder Bueno" Packages. I confess it is my weakness ...

**E:** Scarves.

**What is the best memory of your childhood?** C: The return to Spain with my parents, in our mini caravana hooked to the red golf of my father.

**E:** There are many, but I remember with a special love the day we went for my dog Willy.

**What is the rarest object in your room?**

**C:** The pebble lined with an image of Klimt handmade by my mother.

**E:** A visor of a Pegaso truck in blue methacrylate that I rescued from my father's workshop.

**What is your favorite conversation topic?**

**C:** None and all. In good company, yes!

**E:** I love talking to people on any topic that you're passionate about.

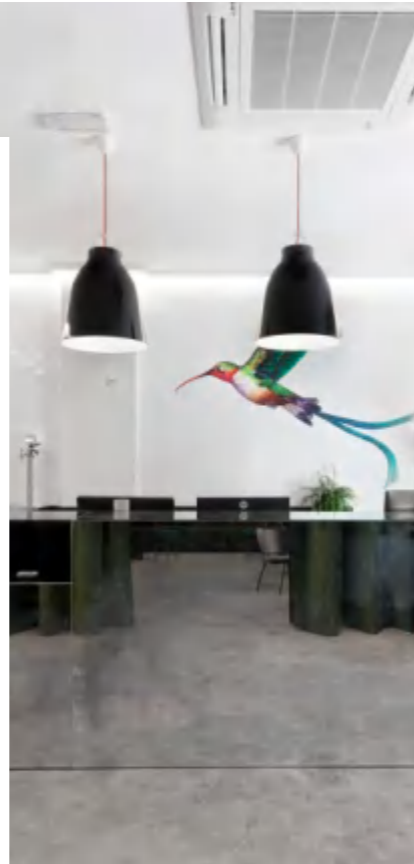
**If you could stay your whole life with the same age, what would it be?** C: I have loved all the stages of my life and I would not go back so the one now ... a little more than 40;

**E:** With how nice it is to learn I think with none forever.

**What do you value most in the design of a furniture wheel?** C: Its sturdiness and lightness when sliding. **E:** Simplicity

**What if you had to design an object to put wheels what would it be?** C: It would be a versatile wall with wheels.

**E:** A children's room.



Knowhere  
Photography: Caulin Photo

# 专访



Ceroconuno  
Photography: Caulin Photo

**Wanna One 室内设计工作室专注于营销、设计及品牌体验，其宗旨是把创意投入到愿意冒险、打破常规、为周围带来积极气氛和创造独特体验的公司服务上。**

**在设计的时候，你希望自己能拥有怎样的超能力呢？**

**C:** 没有超能力就是最好的超能力。每个项目都是一次历险，拥有超能力也许会使用过程缩短，但我最享受的偏偏就是这个完整的过程。

**E:** 如果在设计方面，我完全不希望自己拥有超能力，但在其他方面，我并不介意自己有隐形移动或瞬间移动的超能力。

**如果像美剧《行尸走肉》的时代来临了，你会选择自己的哪一款作品幸存呢？**

**C:** 毫无疑问，我选择2060牛顿旅舍，这是世界末日的旅舍，在行尸走肉的僵尸时代，到这里再适当不过了！

**E:** 2060牛顿旅舍将是最理想的地方。

**若你有幸能和一位梦寐以求的设计师共享晚餐，你会选择谁呢？**

**C:** Patricia Urquiola. (西班牙设计师)

**E:** Jaime Hayon. (西班牙设计师)

**若能进行时空穿梭，你想去未来还是想回到过去？**

**C:** 未来，但如果可以选择，我更享受现在。

**E:** 和Cathy一样，我更享受现在。

**你想出生在哪个对设计有影响的年代？**

**C:** 包豪斯年代。

**E:** 1978年是出生的好年头。

**用三个形容词形容一下你自己吧**

**C:** 英勇，快乐和富有责任心。

**E:** 这个问题我问了我的父母。快乐，天真直率和法式风格的，他们还说我是“手工制作珠宝的爱好者”。

**如果你要写一本书，那这本书的书名是什么呢？**

**C:** 《一起来》。

**E:** 《当下》。

**若你有机会学习新的事物，你会学习什么呢？**

**C:** 学韩语，学吹萨克管，学弹钢琴，学画画，学煮素……有如此多的事情想学，一生都不够！

**E:** 学阿育吠陀（印度医学），学化妆，学特技和描绘，学纹身，学英语……

**你最近读过哪本书？**

**C:** Adeline Dieudonné写的《现实生活》（法语书）。是一本关于家庭的小说，这本小说批判社会现实，用词有趣，还附了一本教你如何在恶劣环境下生存的手册。十分推荐大家阅读。

**E:** Viktor Frank写的《寻找意义的人》。

**我们能够在你的垃圾篓里面找到什么？**

**C:** 健达缤纷乐巧克力的包装。我承认这是我的弱点。

**E:** 手巾。

**你童年最好的回忆是什么？**

**C:** 和父母回西班牙，途中我们住在迷你旅行车里，而那迷你旅行车则由我父亲的红色高尔夫夫拖着走。

**E:** 有很多美好的回忆啊，不过我记得有一天比较有爱，比较特别，那天我们去找我的狗狗维尼。

**你房间里面最奇怪的东西是什么？**

**C:** 我妈妈亲手做的，用克里姆特（一位奥地利画家）图像包裹着的卵石。

**E:** Pegaso（一汽车品牌）的一块遮阳板，那是我从小爸的作坊拯救出来的，用蓝色透明塑料做的。

**你最喜欢谈什么话题？**

**C:** 要不全不喜欢，要不全都喜欢，取决于和我聊天的人！

**E:** 我喜欢谈任何能激起别人兴趣的话题。

**若时间能够停留，你想永远停留在什么年龄段呢？**

**C:** 我喜欢人生的每一阶段，我不会回到过去，因此我选择现在……40岁多那么一点点。

**E:** 学习让岁月变得美好，我不认为有什么是一成不变的。

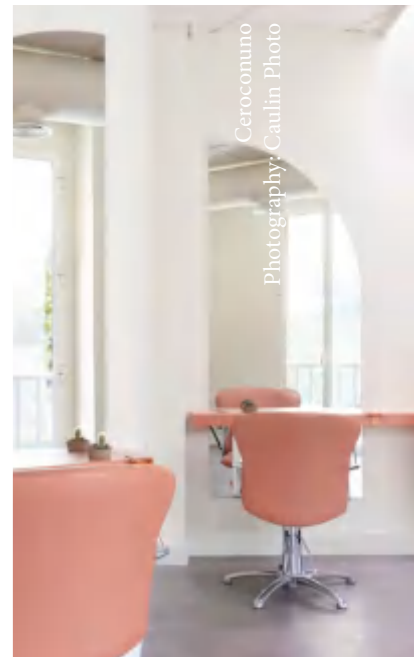
**在家具脚轮设计方面，你最重视什么？**

**C:** 坚固，滑动时要轻盈 **E:** 简便。

**如果你要设计一个带有脚轮的家具，你会设计什么呢？**

**C:** 应该是一带多功能脚轮的墙面。

**E:** 一个小孩房间。



Ceroconuno  
Photography: Caulin Photo



# 5 STEPS TO CREATE YOUR CHRISTMAS BOX

## 简单 5 步 自己动手做最特别的 圣诞装饰柜

圣诞节终于来了，你家门前还是空荡荡而显得毫无圣诞气氛吗？这期我们会手把手教你制作放在自家门前的圣诞装饰柜，那么，你准备好了吗？

**材料：**1个厚度至少为1.8cm的木箱 | 4个艾玛35mm的脚轮 | 圣诞丝带 | 圣诞蝴蝶结 | 相关的圣诞植被 | LED蜡烛灯瓶 | 松果

**工具：**安装脚轮用的螺丝 | 剪刀 | 螺丝刀 | 钻头 | 铅笔 | 标尺



In this article we invite you to create with your own hands a beautiful Christmas ornament for your house porch. Do you dare to do it?

**MATERIALS:** 1 minimum wooden box 1.8cm thickness | 4 emma 35mm wheel | pineapples | christmas ribbons | christmas ties | christmas plants | lamp or jars with led candles

**TOOLS:** | wheel bolts | scissors | screwdriver | drill | pencil | rule

**STEP 1:** Once we have the box ready as we want, we will turn it over and screw the Emma wheels into the base, measuring and marking with a pencil its position so that the four wheels are at the same distance.



# 1

**第一步：** 视你木柜的情况而定，你可以先把木柜打磨一下，涂上油漆，或者什么都不做，保持木柜原来的样子。准备好木柜后，我们把它倒过来，量一下脚轮安装的位置，并用铅笔做好标识，确保四个脚轮之间的距离合适后，安上艾玛脚轮。

**STEP 2:** We are ready to start decorating. The most important thing is that the largest element you have chosen will go in the center of the box, in our case for example it is the lamp post so we will place it in the center.

# 2



**第二步：** 现在，带脚轮的木柜已经准备好了，我们可以开始装饰了。这时候你要清楚地知道你想放进木柜里的最大体积的东西是什么，例如是灯箱，我们把它放到木柜中心的位置。

**STEP 3:** Once we have the central element, we continue with the following elements, the secret is that everything is harmonious and neat. We will use some small pines to surround the lamp post some green and others painted white, also some shorter than others to fill the drawer.



3

**第三步:** 弄好了木柜内中心位置的装饰后, 我们可以继续其他的装饰。要知道弄得好看的秘诀是整体要协调整洁。我们会用一些松果, 一些绿色的植被围绕着灯箱, 植被的长度不一定要一样, 错落有致地填满木柜。

**STEP 4:** Once we see that our box is taking shape we will complete it with the smallest elements, such as tassels, bows or pendants and we will accommodate them as appropriate.



4

**第四步:** 我们可以看到木柜基本成型了, 接下来, 我们就可以用精小的物件适当地来点缀了, 如流苏, 蝴蝶结或挂饰。

5

**STEP 5:** Now that we have our box finished, you can complete it as you wish, such as adding a welcome sign for your guests or a message of congratulations.



**第五步:** 圣诞木柜大功告成啦! 你可以写上自己想说的话, 例如放一块写着“欢迎”的小牌子来迎接到你家拜访的朋友们或一些祝福语。



## BOLA, VARIETY OF COLORS 缤纷色彩 BOLA

Choosing colors is one of the most difficult decisions to make when decorating our environments, since color means many things and can be a great success or a big mistake.

A color can determine the size of a space, can make it appear wider or smaller, gain more light or generate darker environments. A variety of colors in the same house can customize different environments, generating different types of impacts.

Any object that is present in our environment will be part of it, so it is important to choose each one with care and attention. And yes, with the wheels we can not neglect since they are also objects and are part of our environments in different types of furniture. That is why we offer you our BOLA model, a model that adapts to any furniture and space. Thanks to its wide variety of colors will offer you multiple solutions. We have the option with or without brake and you can also choose the material that best suits your needs, translucent or solid.

空间装饰，成败就在选色之间。

颜色可决定视觉空间的大小，可制造出看起来更大或更小，更光亮或更阴暗的环境。同一空间的不同颜色可定义不同的环境，从而产生不同的影响。

在我们空间中存在的任何元素都是空间组成的一部分，因此我们需要细心地去选择每个元素。哪怕小至一个脚轮。我们向你推荐BOLA，她机灵古怪，她色彩缤纷，适用于多种家具，多种空间。你可根据个人所需，选择有制或无制，半透明颜色或纯色。

Red Pink Blue Green Light Blue White Black Orange  
Violet Purple Golden Silver Yellow Gray Brown  
which one do you want?  
红橙黄绿青蓝紫  
你想好了吗?



If you are one of those who fell in love with the beautiful furniture of the previous image, we have good news to give you: it is a real piece of furniture! designed and manufactured by our client UFOU who have found their perfect ally: our BOLA wheel. We knew that these dates are magical, dreams come true!

你是否已爱上图中的 FITIN HELIX 移动收纳柜?梦想成真的时刻要来了!FITIN HELIX 是我们的客户 UFOU 品牌的创新设计出品。结合诺贝的 BOLA 脚轮使用,圣诞老人的礼物就此降临!





凭着独特的工艺和设计  
改变世界对中国  
产品的不良印象

[www.robbycasters.com](http://www.robbycasters.com)



关注我们



网址